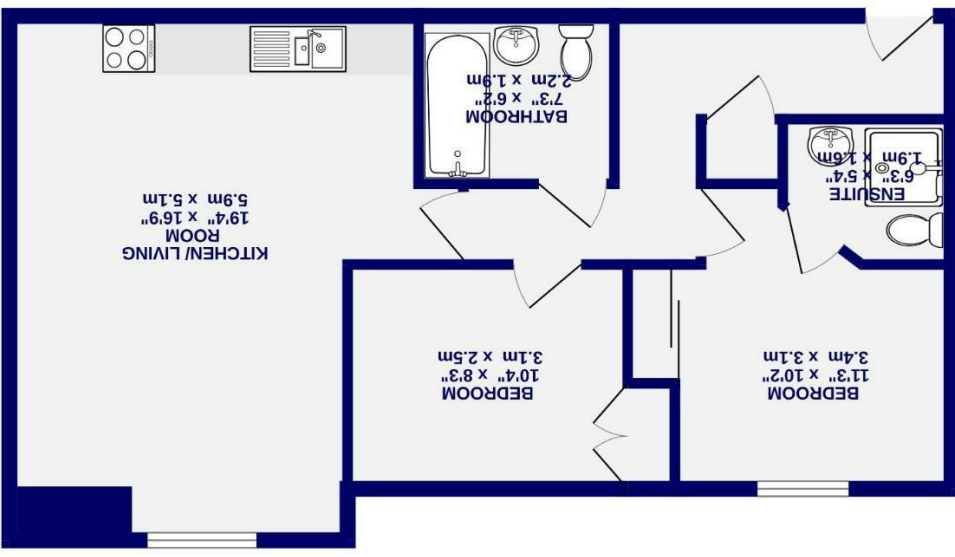




College Court Dringhouses, York YO24 1UG

Leasehold
Council Tax Band - C

- Second Floor Apartment
- Two Double Bedrooms
- Bathroom & Ensuite
- Popular Development
- Allocated Parking
- Ideal First Home Or Investment
- EPC B



GROUND FLOOR
623 sq.ft. (57.9 sq.m.) approx.

These particulars have been prepared as accurately and as reliably as possible, but should not be relied upon as 'statement of fact'. If there is any point which is of particular importance to you, please contact the office and we would be pleased to check the information. We have not tested any services, appliances, equipment or facilities and nothing in these particulars should be deemed to be a statement that they are in good working order, or that the property is in good structural condition or otherwise. Any areas, measurements, floor plans or distances referred to are given only as a guide only and are not precise. Purchasers must satisfy themselves by inspection or by otherwise regarding the items mentioned above and as to the correctness of each of the statements contained in these particulars. No person in the employment of Ashtons has any authority to make or give any representation or warranty whatsoever in relation to this property or these particulars nor enter into any contract relating to the property on behalf of the vendor.

College Court
Dringhouses, York
YO24 1UG

£195,000

 2  2

Situated in the ever-popular residential area to the south of York is this well-presented two bedroom apartment, an ideal opportunity for first-time buyers or investors. Ready to move straight into, the property also benefits from allocated parking and a secure communal entrance.

The accommodation comprises an entrance hall leading into the spacious open-plan living, dining and kitchen area, which features a range of modern wall and base units and generous worktop space. There are two comfortable double bedrooms, with the main bedroom enjoying the use of an en-suite shower room, in addition to a stylish family bathroom.

Externally, the property is complemented by well-maintained communal areas and allocated parking, making this a fantastic and convenient place to call home.

Leasehold
Length of lease- 113 years remaining
Ground rent - Approx £198 per annum
Service Charge- Approx £704.16 per annum

Council Tax Band- C

